

# GMCA Research

Who we are, what we do

# Our Strategy

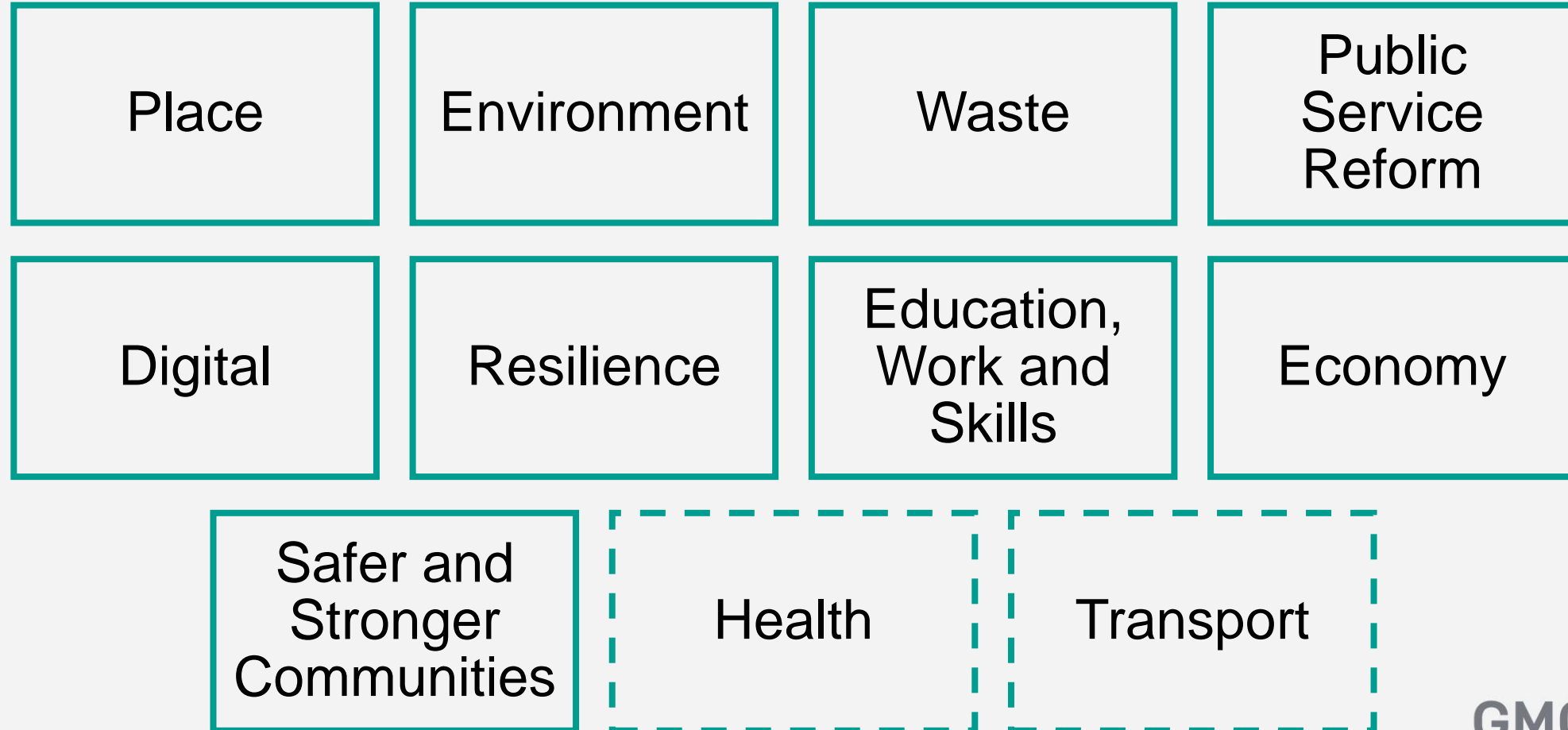
“We want Greater Manchester to be a place where everyone can live a good life, growing up, getting on and growing old in a greener, fairer, more prosperous city region”

- Greater Manchester Strategy 2021

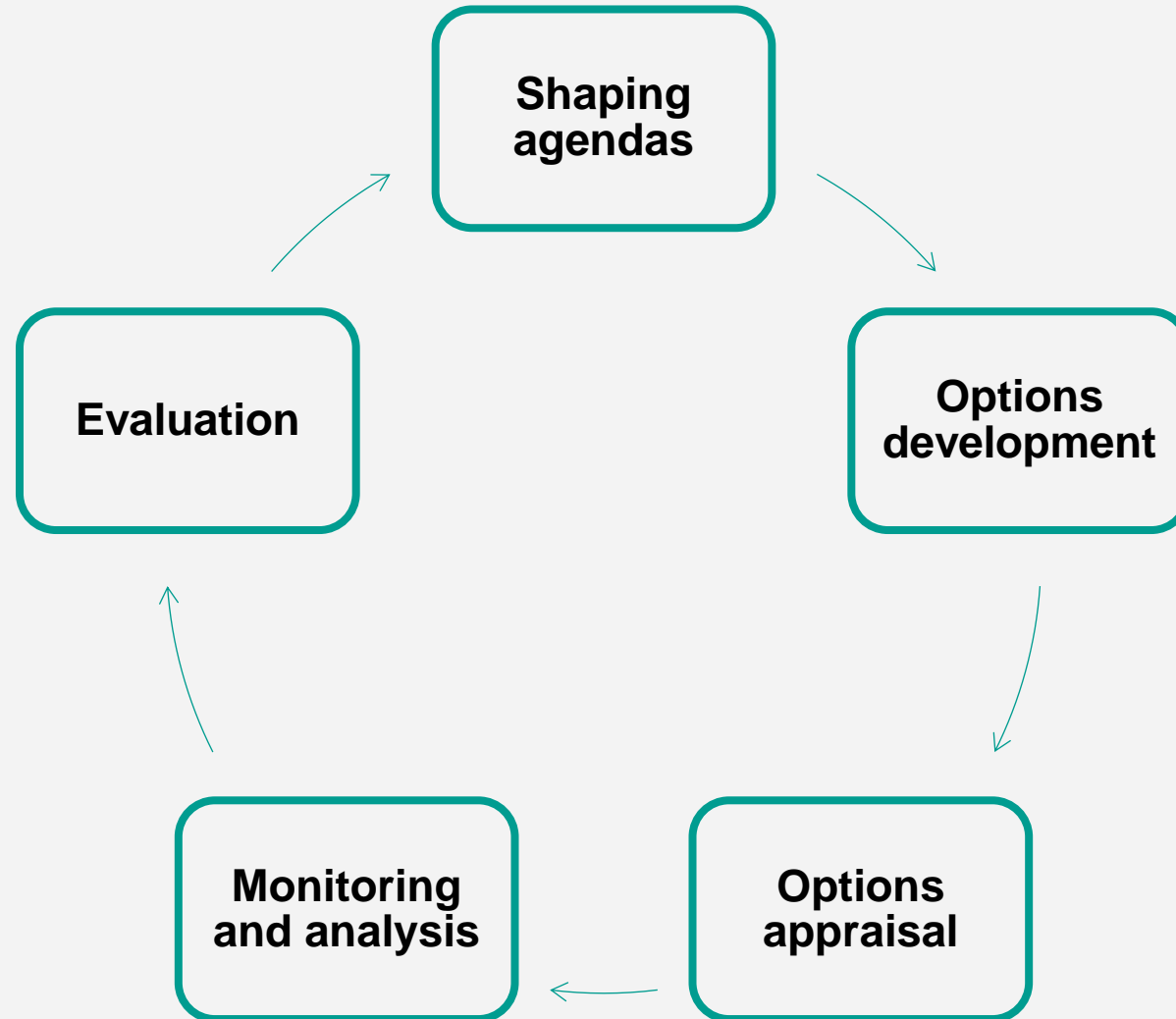
# What is the GMCA?

- We are a combined authority covering the geographic area of Greater Manchester
- Our leadership is made up of the ten council leaders of the Greater Manchester local authorities, and the Mayor – Andy Burnham
- Each of the ten GM councils has one seat on the GMCA, held by the council leader
- Mayor is the chair and eleventh member
- Council leaders form ‘Mayor’s Cabinet’ and hold GM portfolios

# Our areas of work



# What does the Research team do?



# How does the Research team do this?

Research	Quantitative Skills
<ul style="list-style-type: none"><li>■ Scoping / Research Question Design</li><li>■ Project Management</li><li>■ Report Writing</li><li>■ Literature Review</li><li>■ Policy Analysis</li><li>■ Procurement and Project Management of external experts e.g. academics / survey partners</li></ul>	<ul style="list-style-type: none"><li>■ Data Visualisation e.g. Tableau</li><li>■ Advanced Excel</li><li>■ General Statistical Analysis e.g. SPSS</li><li>■ Mapping / GIS (Static and interactive maps / spatial analyses)</li><li>■ Quantitative Surveys – design and delivery e.g. Survey Monkey / CitizenSpace</li><li>■ Programming Languages e.g. R and VBA primarily and some use of SQL and Python</li><li>■ Modelling (Scenario Analysis)</li></ul>

# How does the Research team do this?

Appraisal and Evaluation	Qualitative Skills
<ul style="list-style-type: none"><li>▪ Logic Modelling</li><li>▪ Cost Benefit Analysis</li><li>▪ Process Evaluation</li><li>▪ Impact Evaluation</li><li>▪ Procurement and Project Management of Evaluation Partners</li></ul>	<ul style="list-style-type: none"><li>▪ Qualitative surveys - design and delivery e.g. Survey Monkey / CitizenSpace</li><li>▪ Structured and semi-structured interviews</li><li>▪ Focus Groups</li><li>▪ Participatory and co-production methods</li></ul>

# Skills specialisms

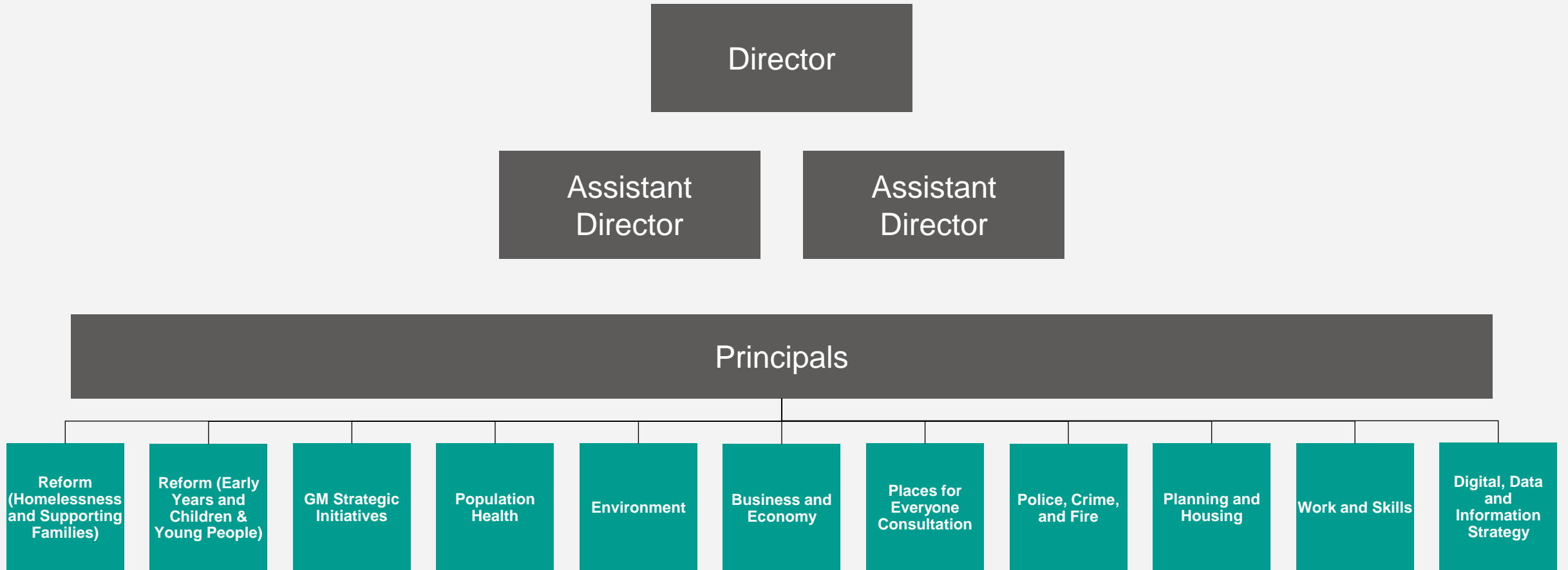
Qualitative

Quantitative

Evaluation

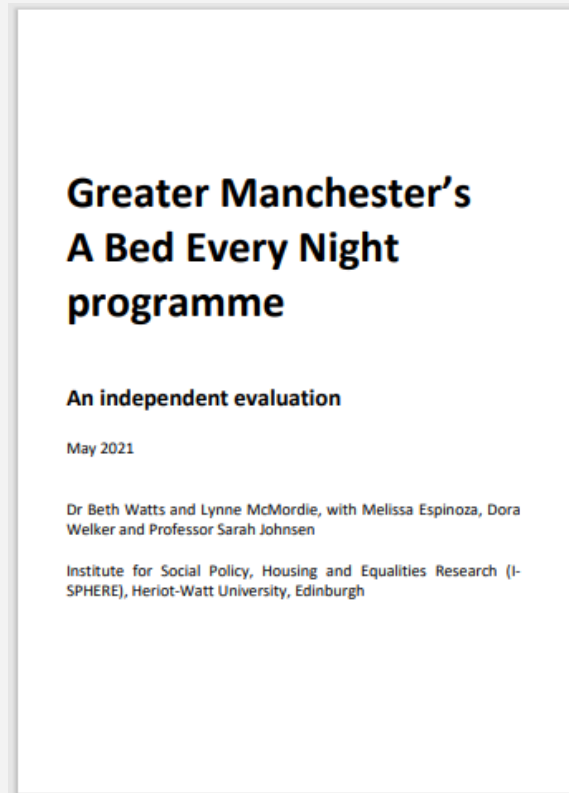
- Skills specialisms are **broad, cross-team groups** that are specialists in, or want to learn, a particular set of skills
- Aim of the groups is to **share and grow skills capacity**
- It is not possible to have each skillset in each sub-team
- We can draw on support and capacity across the team

# Current team structure



# Appraisal and evaluation

Providing appraisal and evaluation support to projects and programmes



What Research have done:

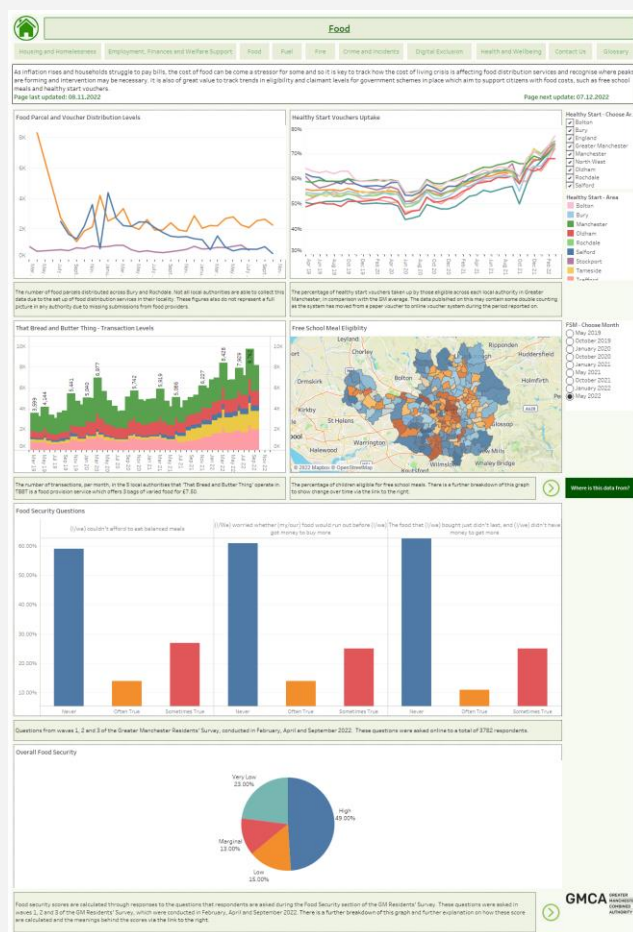
- Creating a tool to assess costs and benefits
- Providing training on cost benefit analysis, logic models and evaluation
- Creating and sharing a unit cost database
- Commissioning and delivering project evaluations

# Cost of living dashboard

Monitoring, reporting and assessing metrics that track the cost of living

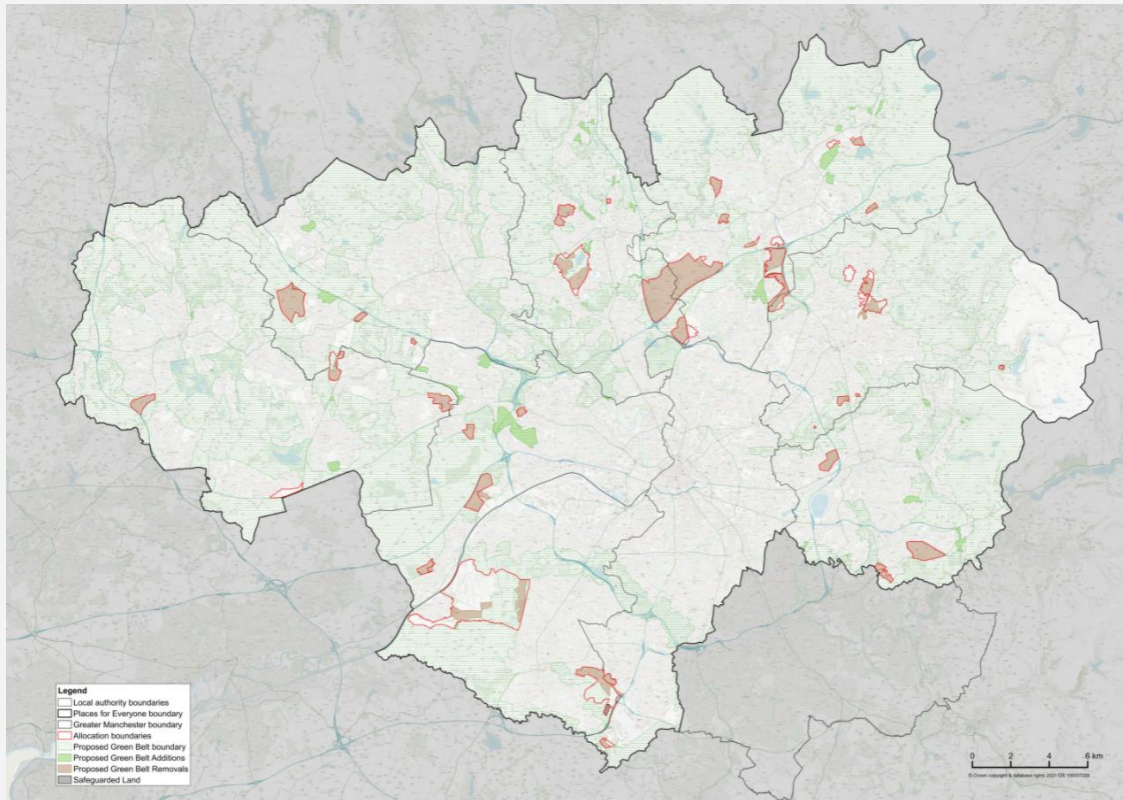
What Research have done:

- Developed a dashboard providing a broad range of metrics to track the crisis and support decision makers
- Working with LA colleagues to get local data and insights
- Refining surveys to get timely info on residents' experiences
- Feeding insight into monthly GMCA reports and briefings to working groups



# Places for Everyone

A long-term plan of nine GM districts for jobs, new homes, and sustainable growth

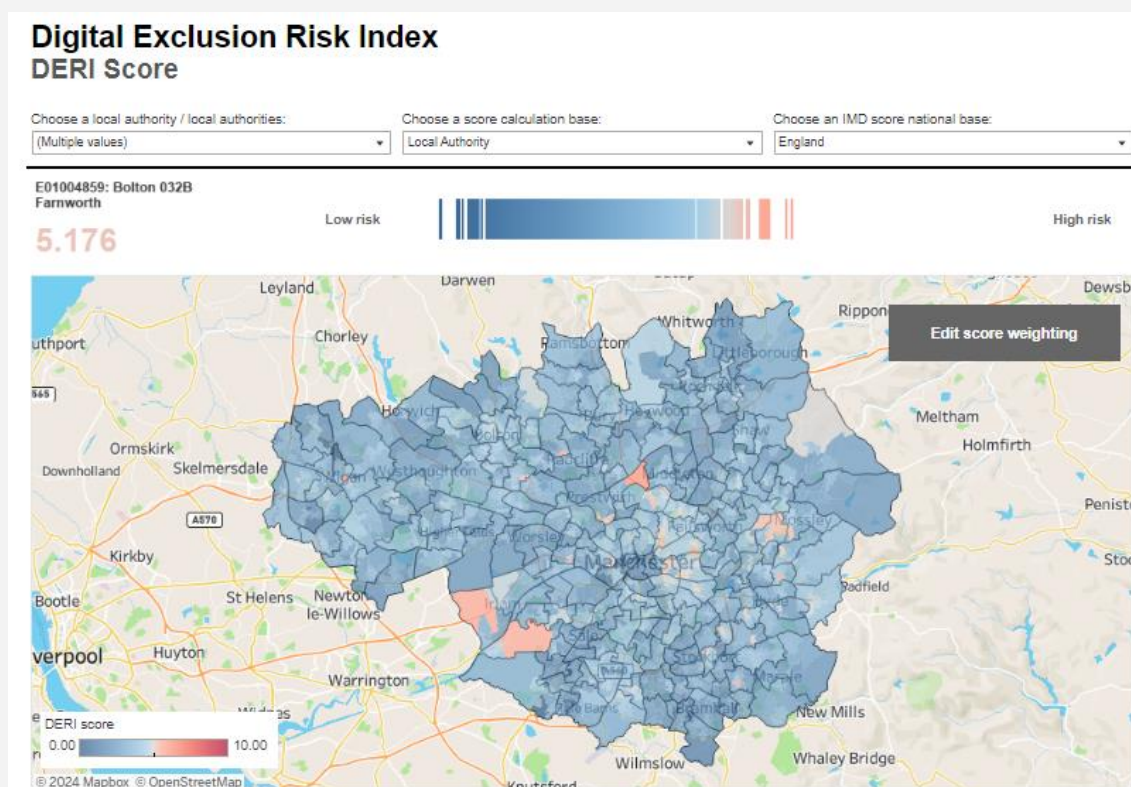


## What Research have done:

- Consultation process to capture resident / stakeholder views
- Visualising the plan - MappingGM
- Define issues and assess housing and employment land need (e.g. Strategic Housing Market Assessment)
- Supporting the Examination in Public process

# Digital Exclusion Risk Index

A dataset and dashboard showing the likelihood of digital exclusion in Great Britain

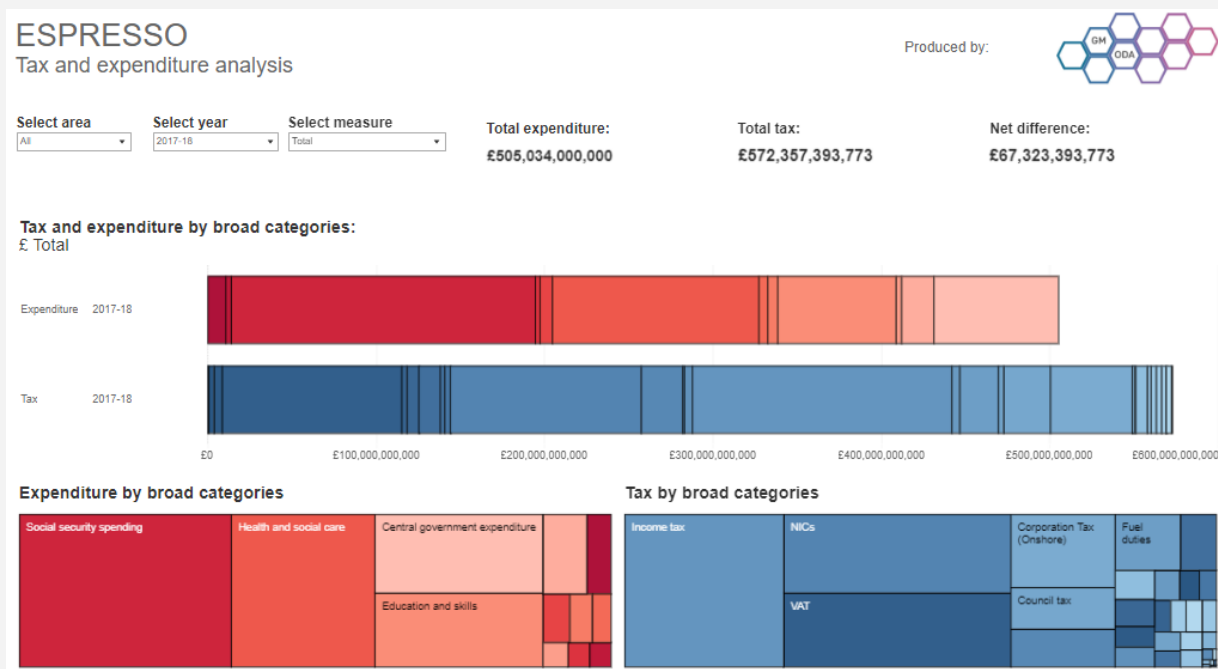


What Research have done:

- Expanded a local Salford model to estimate the likelihood of digital exclusion nationally
- Provided a dataset and tool to explore the data for policy officers and the public
- Shared the calculations, data and methodology for others to use, update or develop

# ESPRESSO

A dataset and tool showing total public sector expenditure and total tax take in an area



## What Research have done:

- Brought together data from across multiple government departments on tax and expenditure
- Cleaned, tidied, codified and assigned expenditure and tax to areas and thematic groupings
- Shared data and created a tool to explore the information in more detail

# Thank you

[christopher.pope@greatermanchester-ca.gov.uk](mailto:christopher.pope@greatermanchester-ca.gov.uk)